

Report D&C

**Number of OHDEN Checkins by District and County by Month**

Note: data are normalized to 4 net sessions per month

2021		Jan	Feb	Mar	Apr	May	Jun	Jul	Aug	Sep	Oct	Nov	Dec	
District	County													
1	Lucus							2	1	0.8				
	Wood													
	Ottawa													
	Erie								1	3.2	2			
	Sandusky													
	Seneca							4	3	3.2	4			
	Huron	2	1						1	5.6	1	1.3	1.6	
	Hancock													
	Wyandot													
	Hardin													
2	Williams													
	Fulton													
	Defiance	4	4					4	4	5.6	4	3.9	4	
	Henry													
	Paulding	1						3	3	2.4	3	1.3	4	
	Putnam													
	Van Wert													
	Allen													
	Mercer													
Auglaize														
3	Shelby		1											
	Logan													
	Darke	3											4	
	Miami	1	1					2	1	2.4	1	1.3	4.8	
	Champaign										1			
	Preble	4	3					2	4	4	3	3.9	3.2	
	Montgomery	4	4					4	4	2.4	4	2	4.8	
	Clark													
Greene	8	7					6	5	3.2	5	5.2	6.4		
4	Butler													
	Warren													
	Clinton		1					2	1	3.2	3		0.8	
	Hamilton													
	Clermont													
	Brown													
	Highland													
	Adams													
5	Summit													
	Portage	3	4					2	2		2	1.3	3.2	
	Trumbull													
	Stark									0.8	2	1.3	0.8	
	Mahoning							5	4	8	4	7.8	1.6	
	Columbiana	6	4					3	7	7.2	6	7.8	5.6	
Carroll														

Report D&C

**Number of OHDEN Checkins by District and County by Month**

Note: data are normalized to 4 net sessions per month

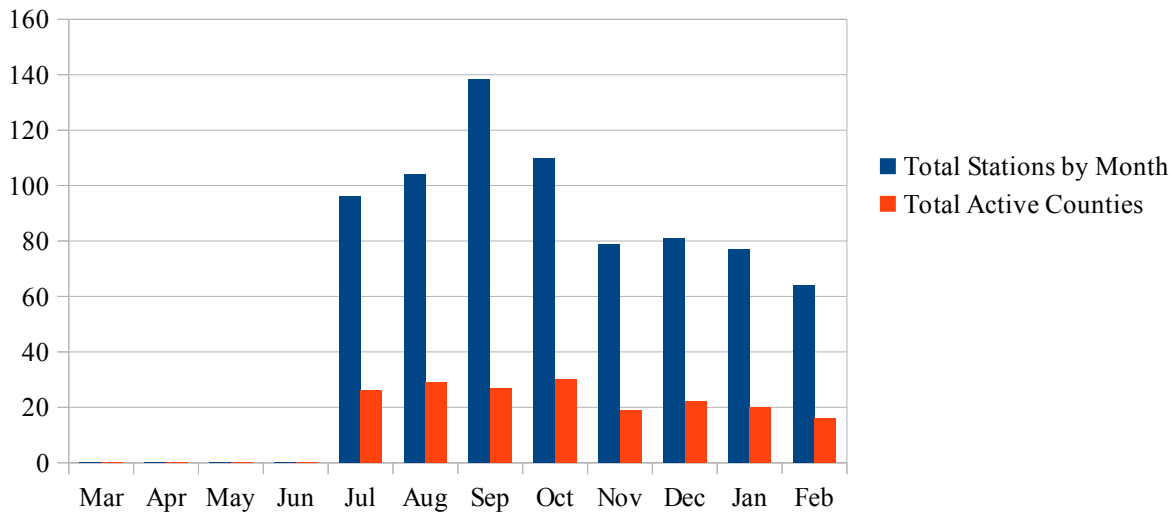
2021		Jan	Feb	Mar	Apr	May	Jun	Jul	Aug	Sep	Oct	Nov	Dec
District	County												
6	Crawford												
	Richland							2	4	4.8	1		
	Ashland												
	Wayne												
	Morrow							3	3	4	3	1.3	
	Holms												
7	Marion												
	Knox												
	Union												
	Dalaware	3	4					3	3	4	3	5.2	3.2
	Licking	4	3					5	3	5.6	8	3.9	0.8
	Madison												
	Franklin							4	5	8	6	3.9	0.8
	Fairfield												
	Fayette												
Pickaway													
8	Ross												
	Hocking												
	Perry												
	Vinton												
	Athens	2	4					4	4	2.4	3		0.8
	Pike							3	3	4	2		
	Jackson												
	Gallia									1.6	1		
	Meigs	7	6					6	5	4	8	6.5	8
	Scioto												
Lawrence													
9	Tuscarawas												
	Harrison												
	Jefferson	6	8					5	4	5.6	5	5.2	8
	Coshocton	4	3					7	13	16	12	7.8	6.4
	Guernsey												
	Muskingum												
	Belmont												
	Morgan												
	Noble	2							1	4	1		
	Monroe							2	2	0.8	3		
Washington	2						2	3	2.4	1		4	
10	Lorain	2						3	4	2.4			
	Medina									0.8			
	Cuyahoga	3						4	3	5.6	3	3.9	2.4
	Lake												
	Geauga												
Ashtabula													
n/a	Outside Stations	2	4					4	2	3.2	3	3.9	0.8

Report D&C

Number of OHDEN Checkins by District and County by Month													
Note: data are normalized to 4 net sessions per month													
2021		Jan	Feb	Mar	Apr	May	Jun	Jul	Aug	Sep	Oct	Nov	Dec
District	County												
n/a	Outside Misc.	4	2						1	7.2	2		0.8
	<b>Total by Month</b>	77	64					96	104	138.4	110	78.7	80.8
	<b>Total Active Co. (&gt;= once / mo.)</b>	20	16					26	29	27	30	19	22
Note: Outside Stations are those outside Ohio but actively involved with OHDEN.													
Outside Misc. are those outside Ohio that may occasionally check in.													

Total Stations and Active Counties

by Rolling Month



February, using 160m as the primary band, continues the trend of lower participation. Switching to the summer schedule with 80m as the primary band begins in March. Shelby County was added as an Active County.